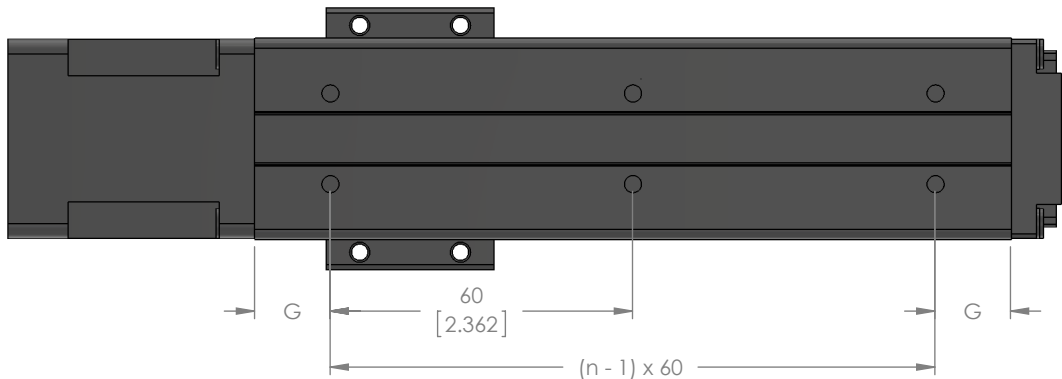
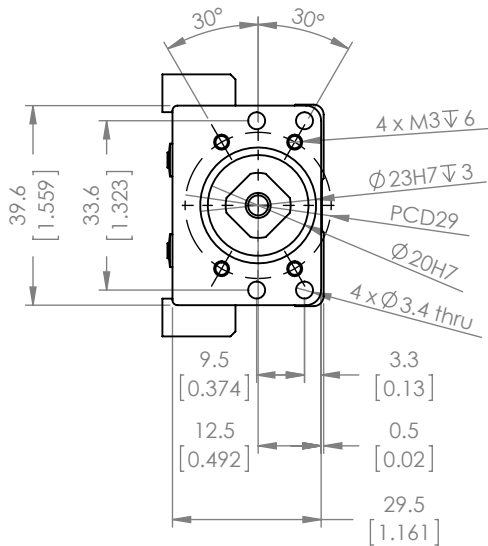
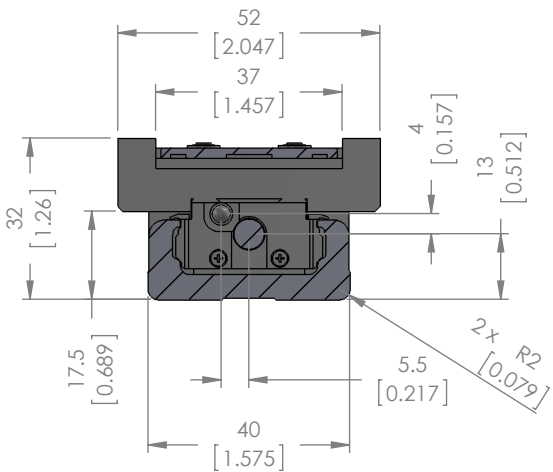
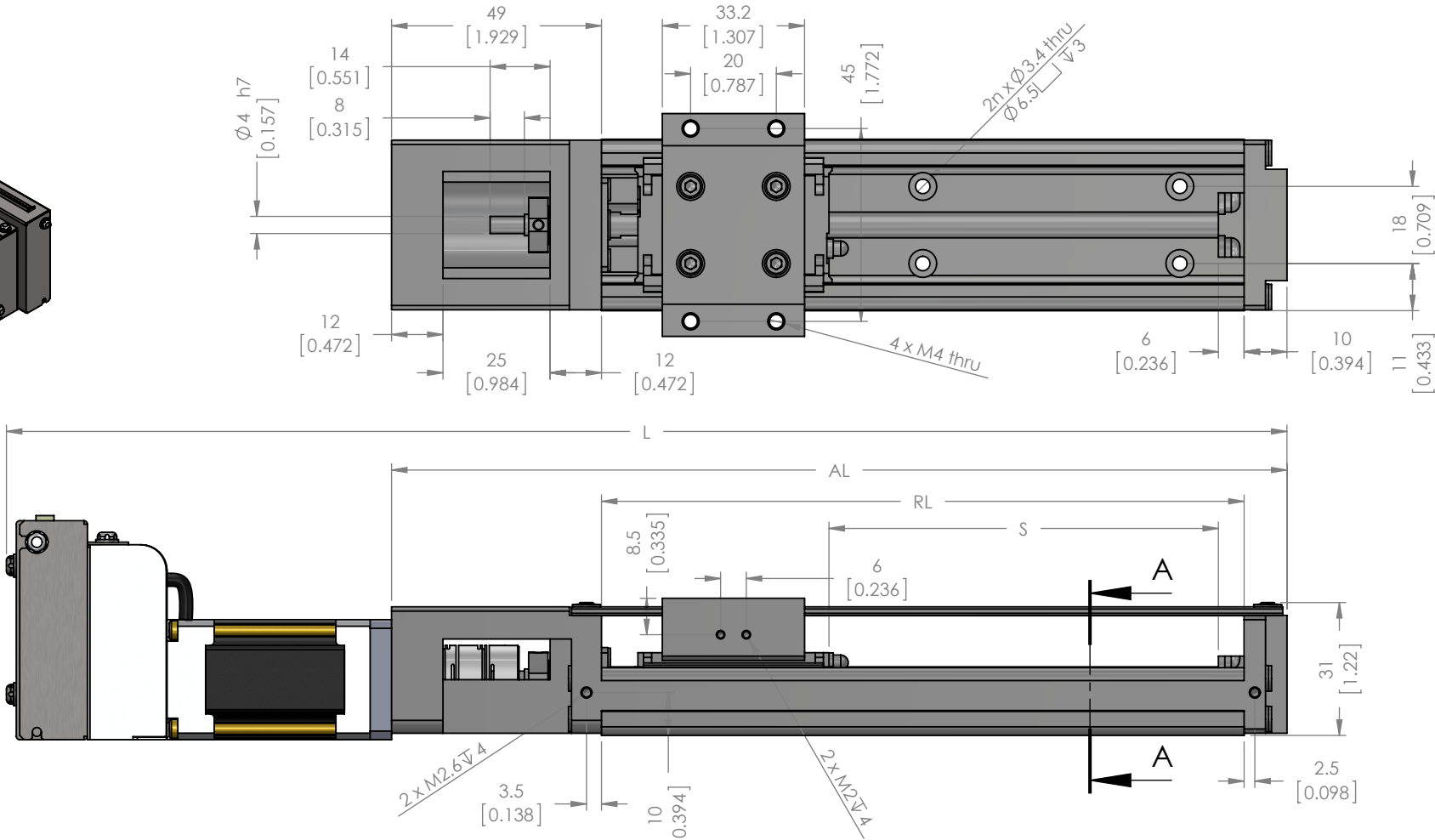
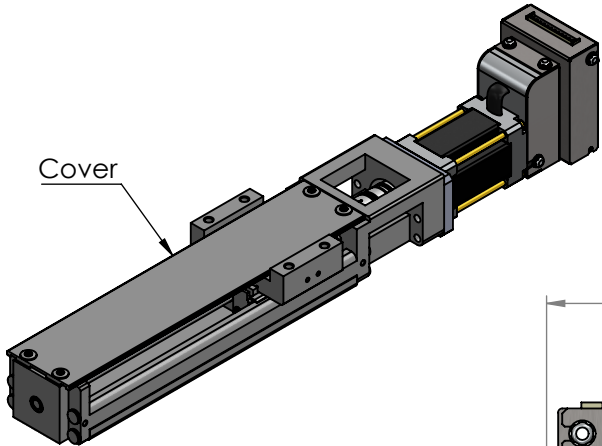


Technical Data			
	Unit	Value	
Ball Screw Lead	mm	1	6
Max. Velocity (w/ 11L30)	mm/s	50	300
Force (w/ 11L30)	N	489	82
		Standard	P Grade
Repeatability	mm	±0.01	±0.003
Positioning Accuracy		No standard defined	0.02
Running Parallelism			0.01
Backlash		0.02	0.003
Starting Torque	N/cm	0.5	1.2


Bill of Materials		
Part No.	Description	Quantity
SKR20	Actuator	1
KR20-BKT-NEMA11	Bracket	1
11L30C	Motor	1
RCLA16C-4-5	Coupling	1
M2.5-5mm	Screws	4
M3-16mm	Screws	4



SPA20-01-□□□	S - Stroke Length	RL - Rail Length	AL - Actuator Length	L - Overall Length	G	n	Mass (kg)*
				w/ 11L30			w/ 11L30
030	40.9 [1.610]	100 [3.937]	159 [6.260]	248.9 [9.799]	20 [0.787]	2	0.84
080	90.9 [3.579]	150 [5.906]	209 [8.228]	298.9 [11.768]	15 [0.591]	3	0.98
130	140.9 [5.547]	200 [7.874]	259 [10.197]	348.9 [13.736]	40 [1.575]	3	1.13

\*For single block, with cover. Please contact for more details.

UNITS: mm [inch]

Unless otherwise specified, tolerance to be:CNS 4018 IT 14 Linear measures  0.5-3 ± 0.1 3-6 ± 0.1 6-30 ± 0.2 30-120 ± 0.3 120-315 ± 0.5	NAME		DATE		DO NOT SCALE DRAWING		DIMENSIONS ARE METRIC			
	DRAWN		M.Mitchell		6-Aug-2014		TITLE:  <div>SPA-Series Integrated Actuators</div>			
	CHECKED									
	ENG APPR.									
PROPRIETARY AND CONFIDENTIAL  THE INFORMATION CONTAINED IN THIS DRAWING IS THE SOLE PROPERTY OF MYOSTAT MOTION CONTROL INC. ANY REPRODUCTION IN PART OR AS A WHOLE WITHOUT THE WRITTEN PERMISSION OF COOLMUSCLE INC. IS PROHIBITED.					SIZE		PRT. NO.		REV	
	<div>Myostat Motion Control Inc. 1+ 905-836-4441 www.myostat.ca</div>				B		SPA20-X-0X-XXX-X-XXXX-11L30-X		0.0	
					SCALE: 2:3		WEIGHT: -		SHEET 1 OF 2	

D

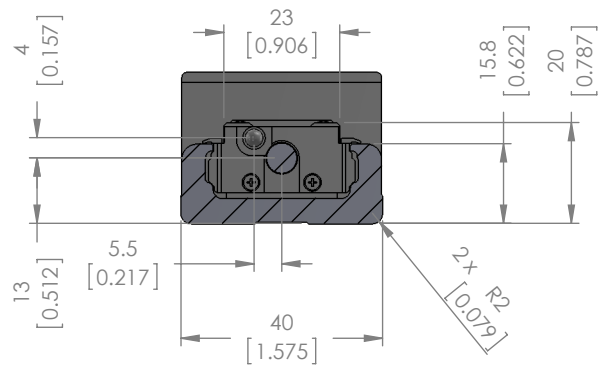
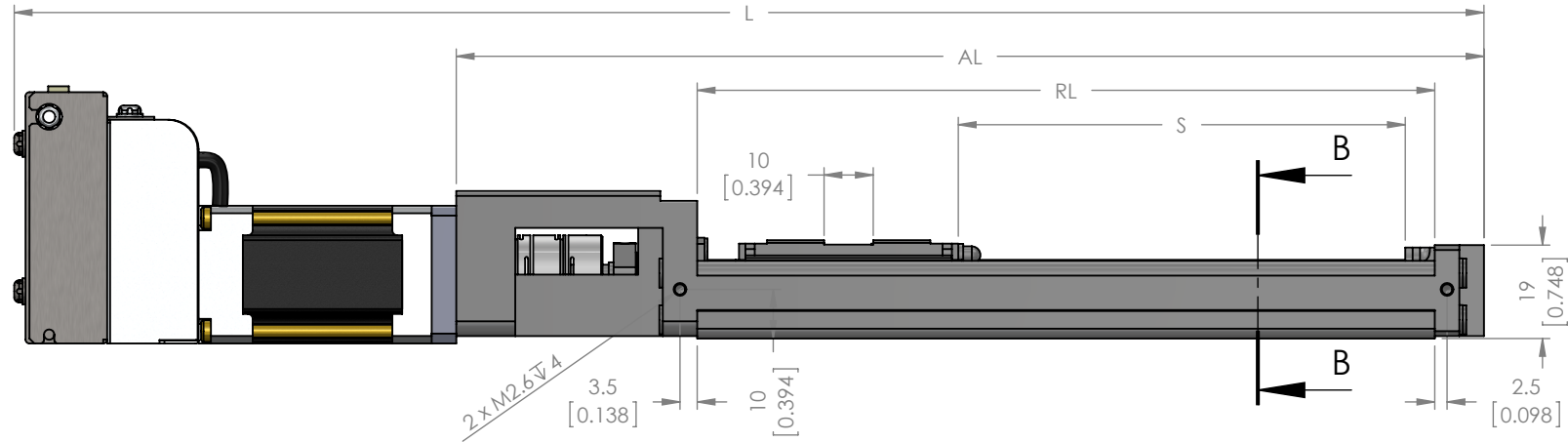
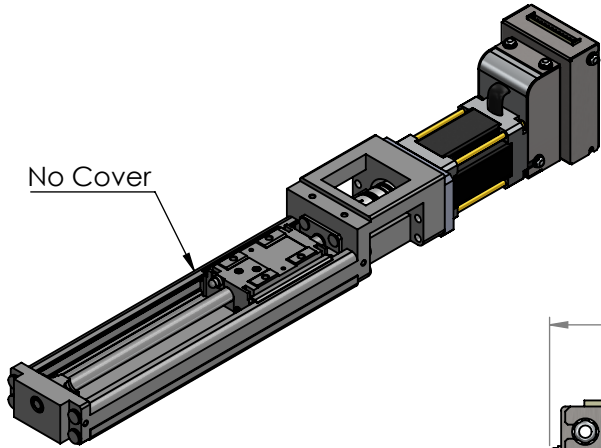
C

B

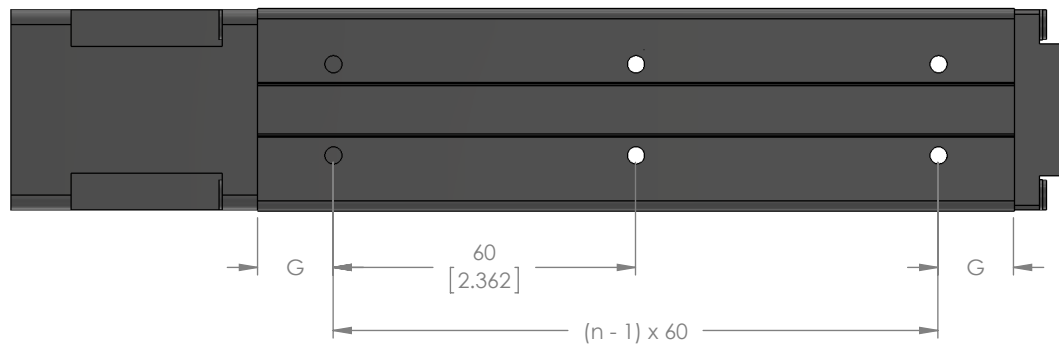
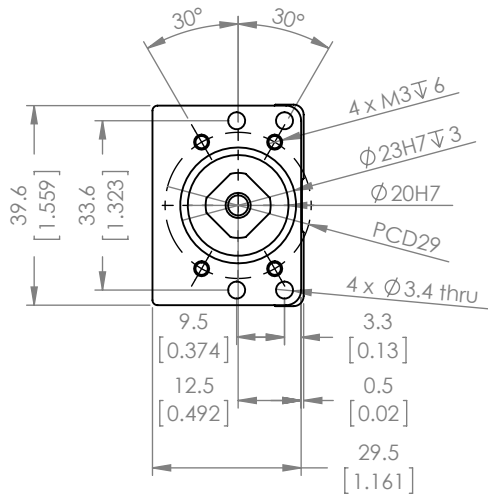
A

Technical Data			
	Unit	Value	
Ball Screw Lead	mm	1	6
Max. Velocity (w/ 11L30)	mm/s	50	300
Force (w/ 11L30)	N	489	82
		Standard	P Grade
Repeatability	mm	±0.01	±0.003
Positioning Accuracy		No standard defined	0.02
Running Parallelism			0.01
Backlash			0.003
Starting Torque	N/cm	0.5	1.2

Bill of Materials		
Part No.	Description	Quantity
SKR20	Actuator	1
KR20-BKT-NEMA11	Bracket	1
11L30C	Motor	1
RCLA16C-4-5	Coupling	1
M2.5-5mm	Screws	4
M3-16mm	Screws	4




SECTION B-B



\*For single block, no cover. Please contact for more details.

UNITS: mm [inch]

SPA20-01-□□□	S - Stroke Length	RL - Rail Length	AL - Actuator Length	L - Overall Length	G	n	Mass (kg)*
				w/ 11L30			w/ 11L30
030	40.9 [1.610]	100 [3.937]	159 [6.260]	248.9 [9.799]	20 [0.787]	2	0.79
080	90.9 [3.579]	150 [5.906]	209 [8.228]	298.9 [11.768]	15 [0.591]	3	0.92
130	140.9 [5.547]	200 [7.874]	259 [10.197]	348.9 [13.736]	40 [1.575]	3	1.06

Unless otherwise specified, tolerance to be: CNS 4018 IT 14 Linear measures 0.5-3 ±0.1 3-6 ±0.1 6-30 ±0.2 30-120 ±0.3 120-315 ±0.5	NAME	DATE	DO NOT SCALE DRAWING	DIMENSIONS ARE METRIC	
	DRAWN	M.Mitchell	6-Aug-2014	TITLE:  SPA-Series Integrated Actuators	
	CHECKED				
	ENG APPR.				
PROPRIETARY AND CONFIDENTIAL THE INFORMATION CONTAINED IN THIS DRAWING IS THE SOLE PROPERTY OF MYOSTAT MOTION CONTROL INC. ANY REPRODUCTION IN PART OR AS A WHOLE WITHOUT THE WRITTEN PERMISSION OF COOLMUSCLE INC. IS PROHIBITED.	 Myostat Motion Control Inc. 1+ 905-836-4441 www.myostat.ca		SIZE <b>B</b>		REV 0.0
			PRT. NO. SPA20-X-0X-XXX-X-XXXX-11L30-X		
			SCALE: 2:3	WEIGHT: -	SHEET 2 OF 2