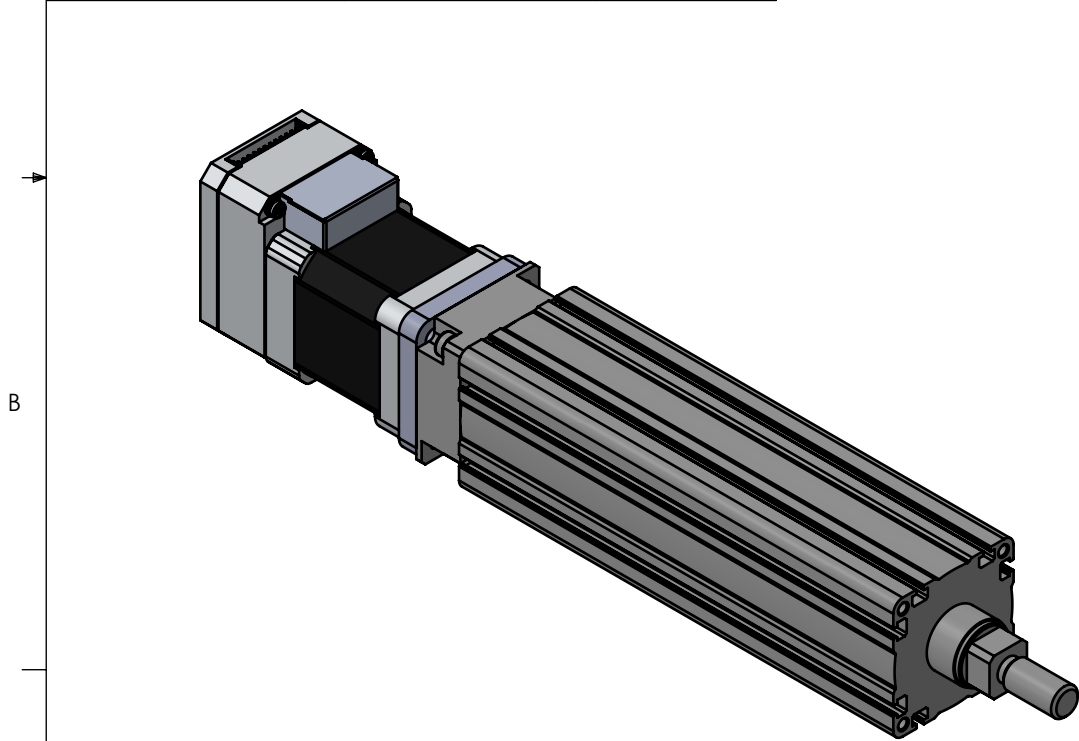
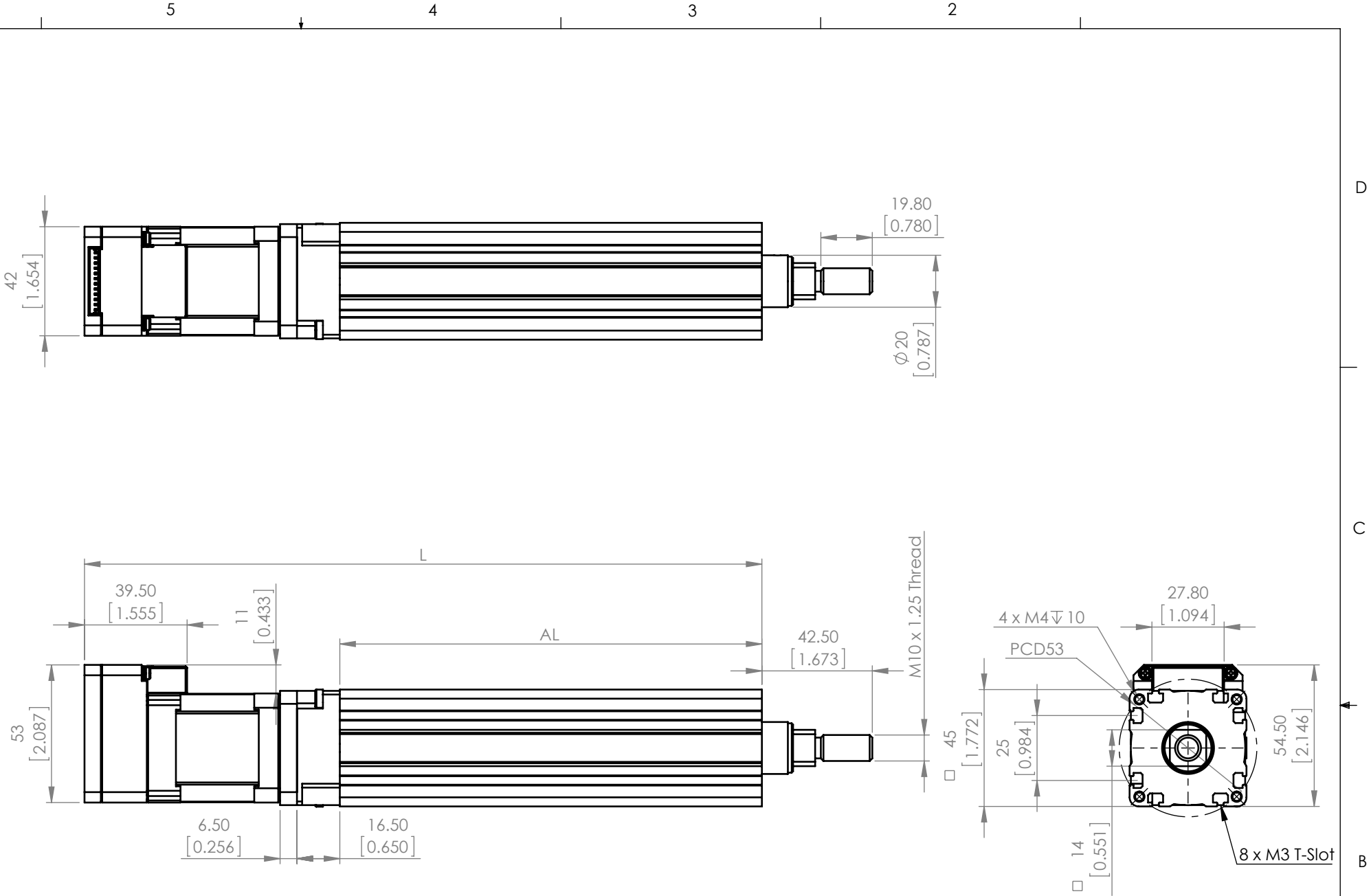


Technical Data			
		Value	Unit
Repeatability		±0.02	mm
Ball Screw Shaft Diameter		8	
Ball Screw Lead		12      6	
Rated Speed	600	300	mm/s
Rated Thrust	67	134	N
Maximum Thrust	201	402	
Maximum Acceleration	0.3		G
Horizontal Mass Capacity	7	14	kg
Vertical Mass Capacity	3.1	6.2	

Bill of Materials		
Part No.	Description	Quantity
VLA-CT-45	Actuator	1
RD45T-BKT-NEMA17	Bracket	1
17S30C / 17L30C	Motor	1
M3-5mm	Screws	2
M3-8mm	Screws	2



Model	Effective Stroke (mm)	L (mm)		AL (mm)
		w/ 17L30	w/ 17S30	
RD-45T-050	50	260.8	246	162.5
RD-45T-100	100	310.8	296	212.5
RD-45T-150	150	360.8	346	262.5
RD-45T-200	200	410.8	396	312.5




**Naming Convention:**

RD<Size>-<Lead>-<Stroke>-<Motor>-<Interface>

ex.  
RD-45T-06-150-17L30-C

**UNITS: mm [inch]**

<div>Unless otherwise specified, tolerance to be: CNS 4018 IT 14 Linear measures</div> <div>0.5-3 ± 0.1 3-6 ± 0.1 6-30 ± 0.2 30-120 ± 0.3 120-315 ± 0.5</div>	NAME	DATE	DO NOT SCALE DRAWING		DIMENSIONS ARE METRIC	
	DRAWN	E.Lock	Jan-27-2015	TITLE:  RD-Series Actuator		
	CHECKED					
	ENG APPR.					
<div>PROPRIETARY AND CONFIDENTIAL</div> <div>THE INFORMATION CONTAINED IN THIS DRAWING IS THE SOLE PROPERTY OF MYOSTAT MOTION CONTROL INC. ANY REPRODUCTION IN PART OR AS A WHOLE WITHOUT THE WRITTEN PERMISSION OF COOLMUSCLE INC. IS PROHIBITED.</div>	<div></div> <div>Myostat Motion Control Inc. +1 905-836-4441 www.myostat.ca</div>			SIZE	PRT. NO.	REV
				B	RD-45T-XX-XXX-XXXXX-X	1.0
	SCALE: 1:2		WEIGHT: -		SHEET 1 OF 1	