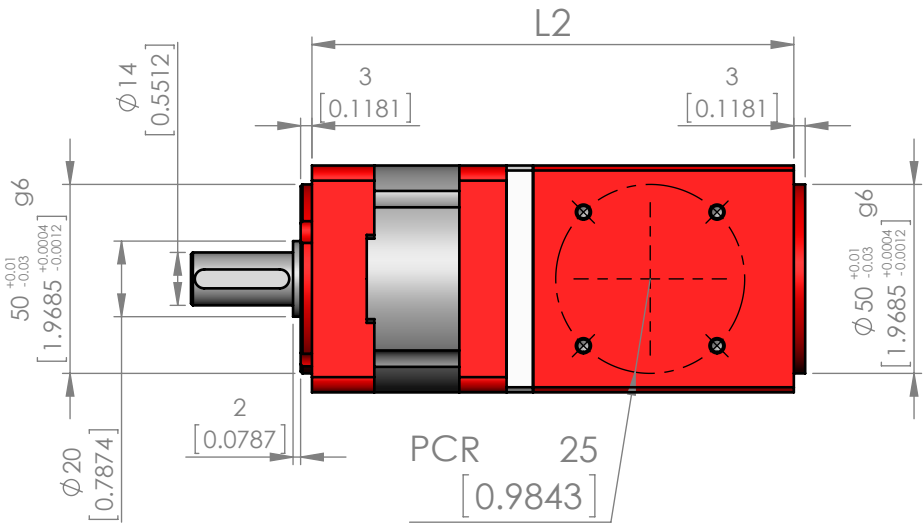


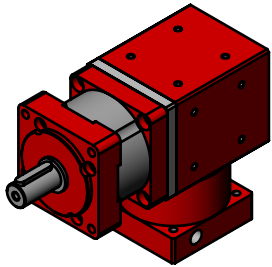
TECHNICAL DATA				
	Units	Ratio	QAAS	QLAS
Available Ratios	-		3~50	6~50
Nominal Ouput Torque*	Nm	8,10,15	16	
		35	15	
		20,30,40,50	12	
Max. Output Torque		3~50	nominal x2	
Emergency Stop Torque			nominal x2.5	
Nominal Input Speed	RPM		4,000	
Max. Input Speed			6,000	
Max. Axial Load	N		600	
Max. Radial Load			500	
Torsional Stiffness	Nm/arcmin		1.5	
Efficiency at Full Load	%		90≤	
Avg. Service Life	Hrs		10,000	
Weight	Kg		3.0	2.8
Backlash	arcmin		≤7	
Noise Level*	dB		≤70	
Protection Rating	IP rating		64	
Operating Temp.	°Celcius		-20 to 100	

*Values given for standard ratios - other ratios available

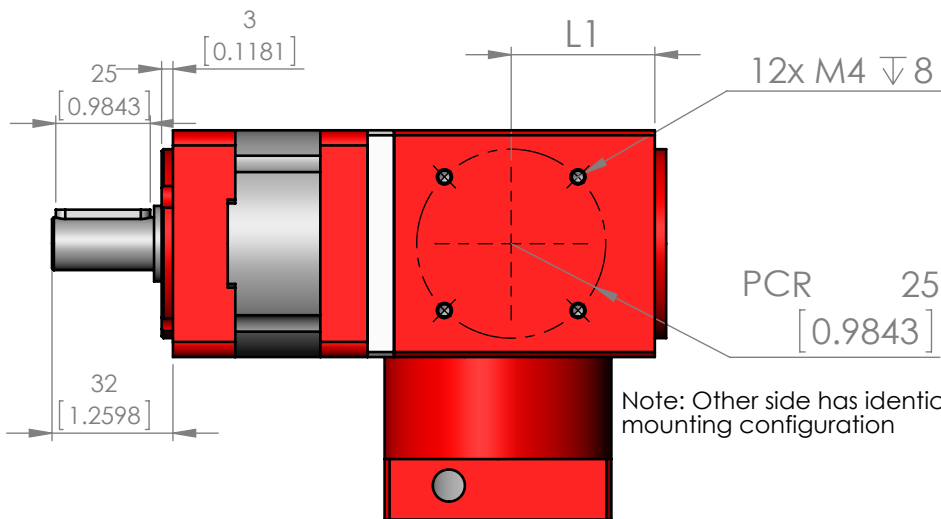


Model	L1	L2
QLAS-060-00 □	38	127.5
QAAS-060-00 □	47.5	146

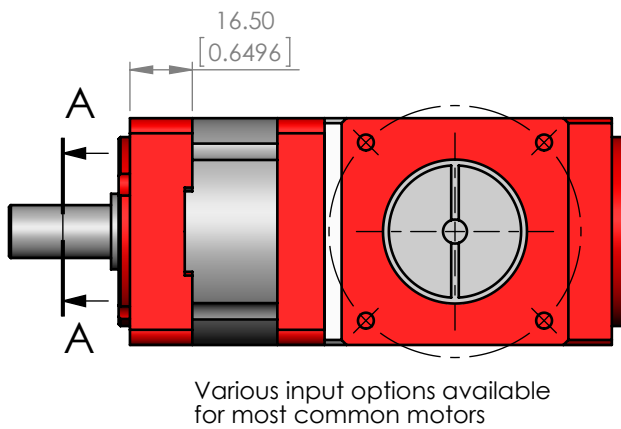
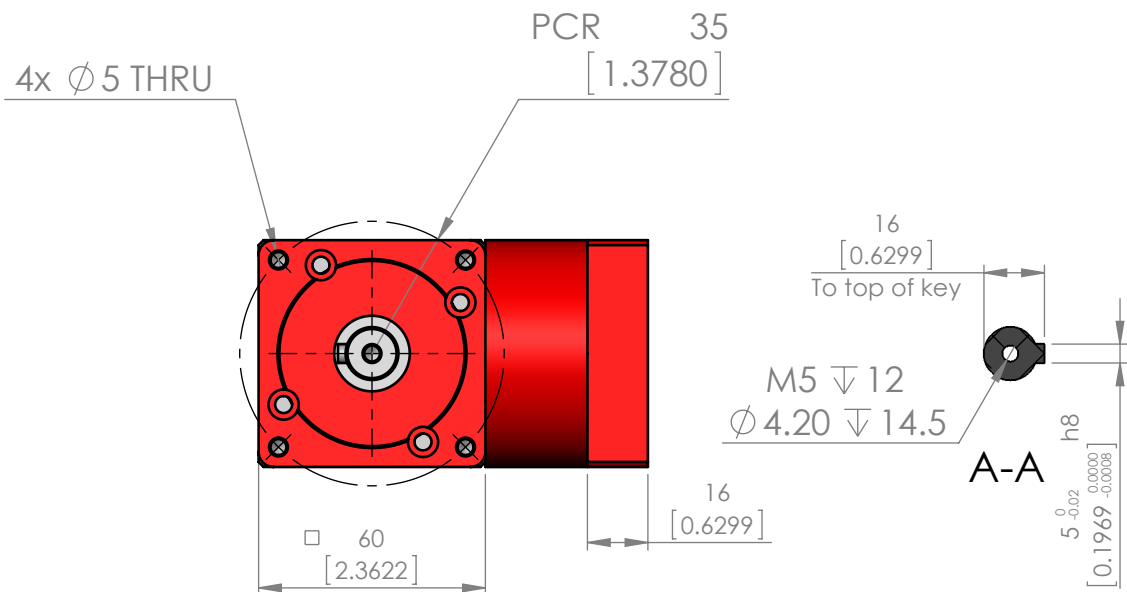
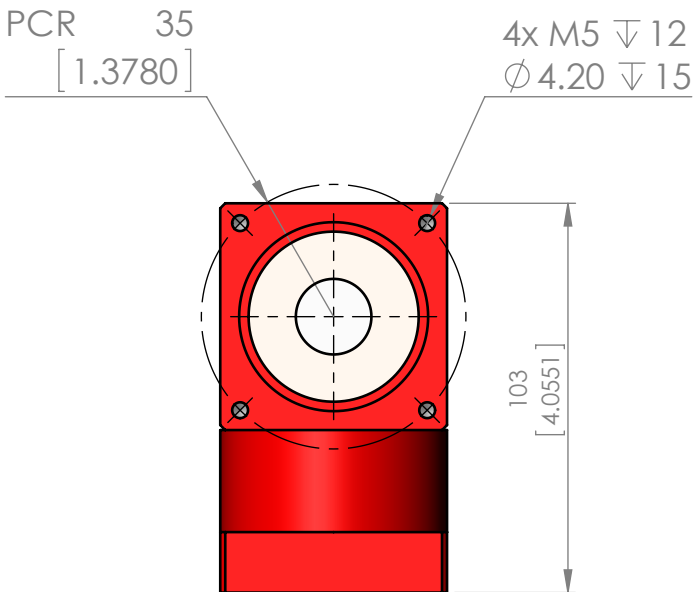
Note: QLAS-060-00 □ model shown



SCALE 1:4



Note: Other side has identical mounting configuration



Various input options available for most common motors

UNITS: mm [inch]

REVISION HISTORY			
REV.	DATE	DESCRIPTION	DRAWN
2	21 JULY, 2015	Shaft length changed from 28 to 32 mm	E.Lock
2.1	27 July, 2015	Added revision history table	E.Lock
Unless otherwise specified, tolerance to be: CNS 4018 IT 14 Linear measures 0.5-3 ±0.1 3-6 ±0.1 6-30 ±0.2 30-120 ±0.3 120-315 ±0.5		NAME	DATE
		DRAWN	E.Lock 27 July, 2015
		CHECKED	
PROPRIETARY AND CONFIDENTIAL THE INFORMATION CONTAINED IN THIS DRAWING IS THE SOLE PROPERTY OF MYOSTAT MOTION CONTROL INC. ANY REPRODUCTION IN PART OR AS A WHOLE WITHOUT THE WRITTEN PERMISSION OF COOLMUSCLE INC. IS PROHIBITED.		ENG APPR.	
		TITLE: R-Series Gearbox	
		SIZE B	PRT. NO. Q □ AS-060-0 □ □
		SCALE: 1:2	WEIGHT: -
		REV 2.1	
		SHEET 1 OF 1	