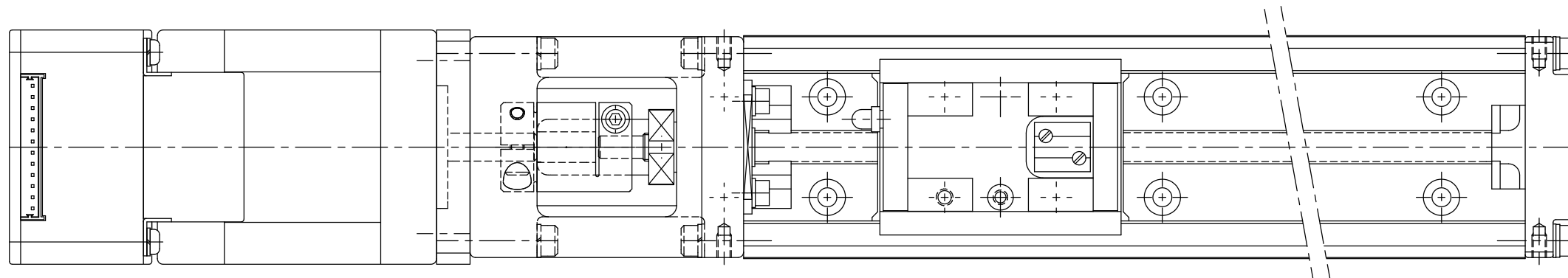
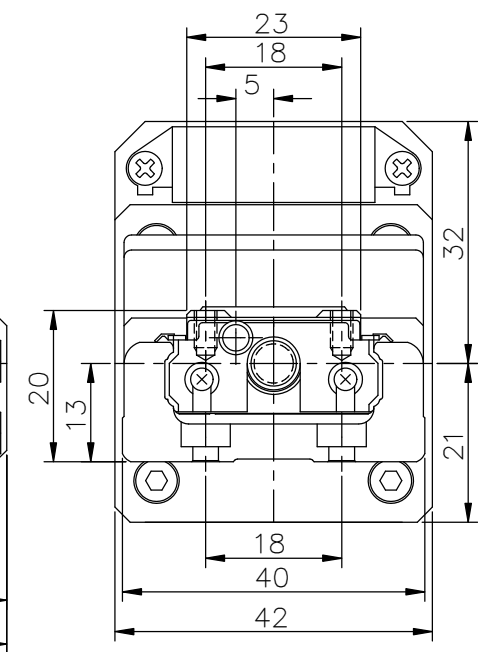
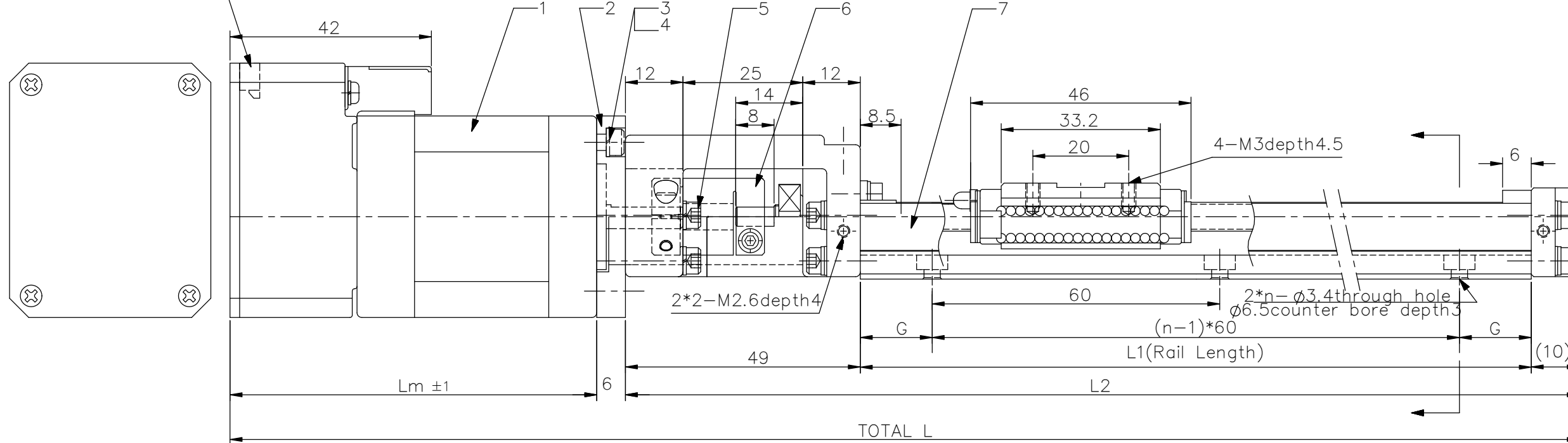


PA20 XXXXX17L30

UNITS : mm



Connector(Molex)
53254-1210



7	Actuator KR20	1	KR2001A	
6	Coupling ø16*L20	1	RCL16-5-4	Reliance Gear Company
5	Hexagonal Head Bolt M3*18	4	CBM-3-18	SCM435
4	Spring Washers M3*0.7	8	SLW 3	SWRH57
3	Hexagonal Head Bolt M3*6	4	CBM 3-6	SCM435
2	KR20 Mounting Plate Name17	1	CM42P0011	Aluminum Black
1	CM1-X-17 L30	1	CM42G0001	
Parts No	Parts Name	Qty	Drawing No	Remarks

RAIL LENTH L1	L2	STROKE	G	n	MOTOR Lm		TOTAL L	
					SHORT	LONG	SHORT	LONG
100	159	41.5	20	2			225.5	241.5
150	209	91.5	15	3	60.5	76.5	275.5	291.5
200	259	141.5	40	3			325.5	341.5

Date	2002.10.25	Drawing Name	PA20XXXXX17L30	
Scale	1/1	Drawing No	CM42GKR20	
Approved	Inspected	Designed		
	Chris	Liu	MUSCLE CO.,LTD.	