

MSA - M6S - E - BC -

ENTER

OVERALL LENGTH [mm]

SELECT

DRIVE SHAFT LOCATION *

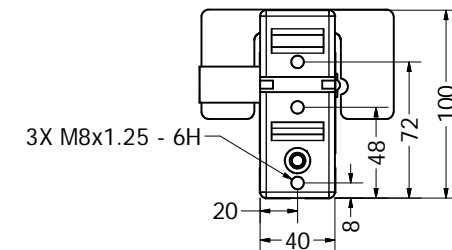
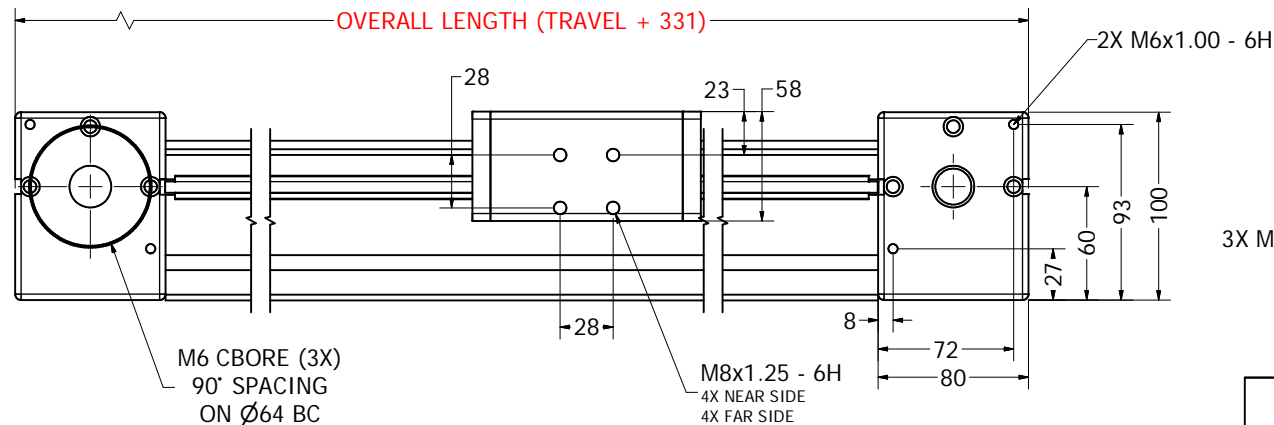
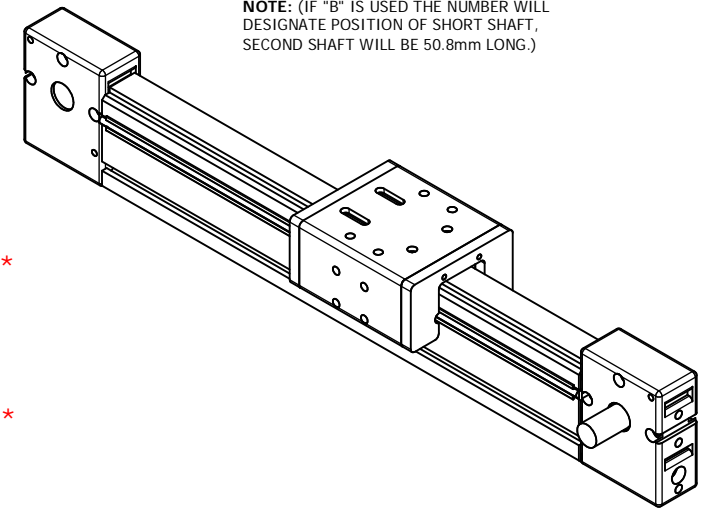
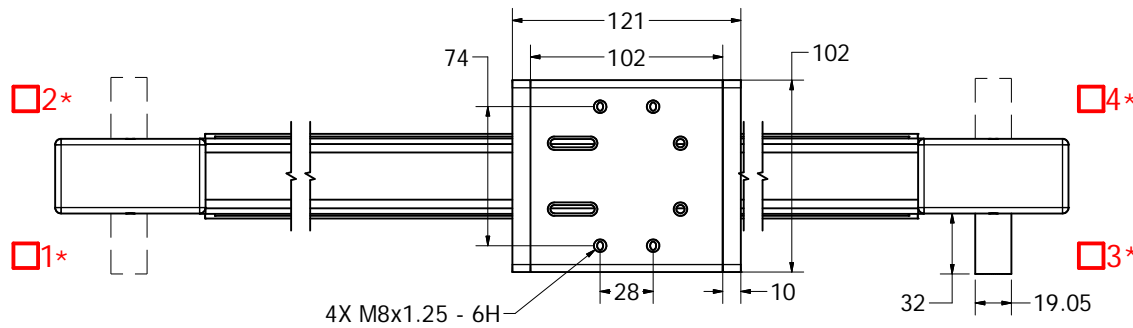
SPECIFY TYPE

A = SINGLE SHAFTED

B = DOUBLE SHAFTED

NOTE: (IF "B" IS USED THE NUMBER WILL
DESIGNATE POSITION OF SHORT SHAFT,
SECOND SHAFT WILL BE 50.8mm LONG.)

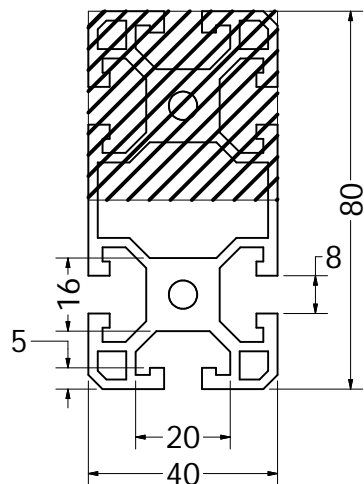
STOCK TRAVEL	OVERALL LENGTH	TRAVEL
	00750	419
	01000	669
	01250	919
	01500	1169
	01750	1419
	02000	1669
	02250	1919
	CUSTOM TRAVEL	



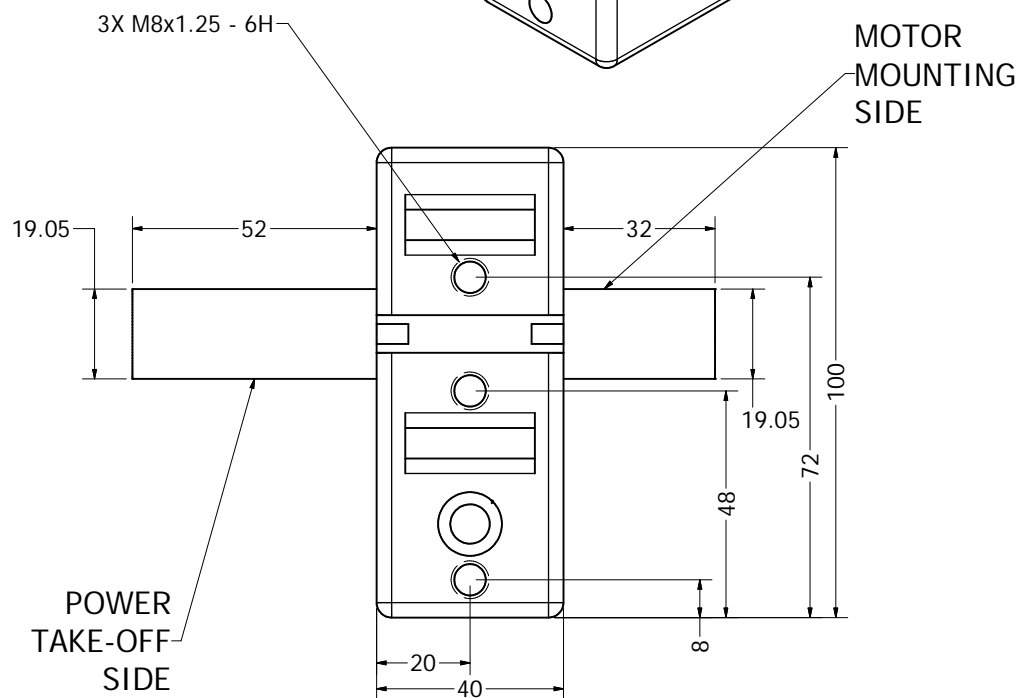
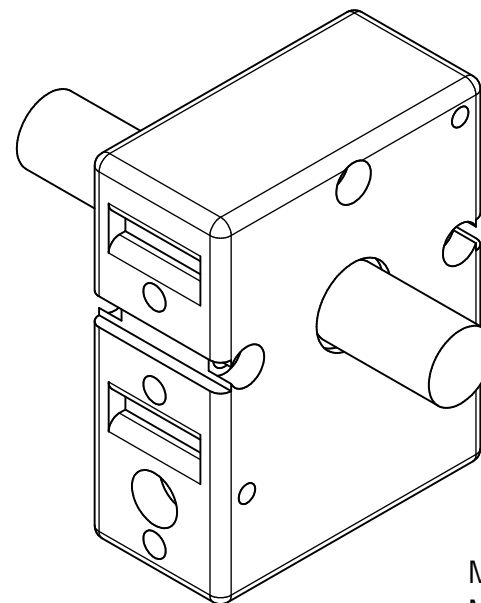
APPROVED: _____
DATE: _____

 3RD ANGLE PROJECTION		 MACRON DYNAMICS, INC.	
THIS DRAWING IS THE PROPERTY OF MACRON DYNAMICS, INC. ANY REPRODUCTIONS SHALL BE FOR QUOTATION, MANUFACTURING, OR PURCHASING PURPOSES ONLY. RELEASE OF DRAWINGS TO OTHER CONCERNS DOES NOT CONSTITUTE LICENSING IN ANY WAY. INFORMATION CONTAINED HEREIN IS PROPRIETARY AND CONFIDENTIAL.		TITLE MACRON 6	
COMPUTER GENERATED DOCUMENT. MANUAL CHANGES NOT PERMITTED		DWG. NO. MSA-M6S	
UNLESS OTHERWISE SPECIFIED ALL DIMENSIONS IN MILLIMETERS		REV 02 DO NOT SCALE DRAWING SHEET 1 OF 6	

ACTUATOR BODY MOUNTING FEATURES T-NUT SLOTS



DOUBLE SHAFTED PULLEY



<p>3RD ANGLE PROJECTION</p> <p>THIS DRAWING IS THE PROPERTY OF MACRON DYNAMICS INC. ANY REPRODUCTIONS SHALL BE FOR QUOTATION, MANUFACTURING, OR PURCHASING PURPOSES ONLY. RELEASE OF DRAWINGS TO OTHER CONCERNS DOES NOT CONSTITUTE LICENSING IN ANY WAY. INFORMATION CONTAINED HEREIN IS PROPRIETARY AND CONFIDENTIAL.</p> <p>COMPUTER GENERATED DOCUMENT. MANUAL CHANGES NOT PERMITTED</p> <p>UNLESS OTHERWISE SPECIFIED ALL DIMENSIONS IN MILLIMETERS</p>		<p>MACRON DYNAMICS, INC.</p> <p>TITLE MACRON 6</p> <p>DWG. NO. MSA-M6S</p> <p>REV 02</p> <p>DO NOT SCALE DRAWING SHEET 2 OF 6</p>	
--	--	---	--