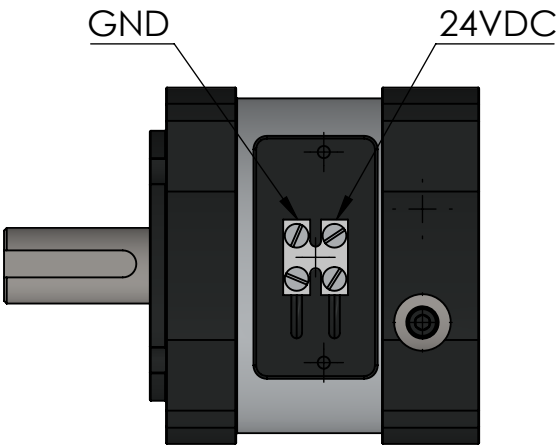
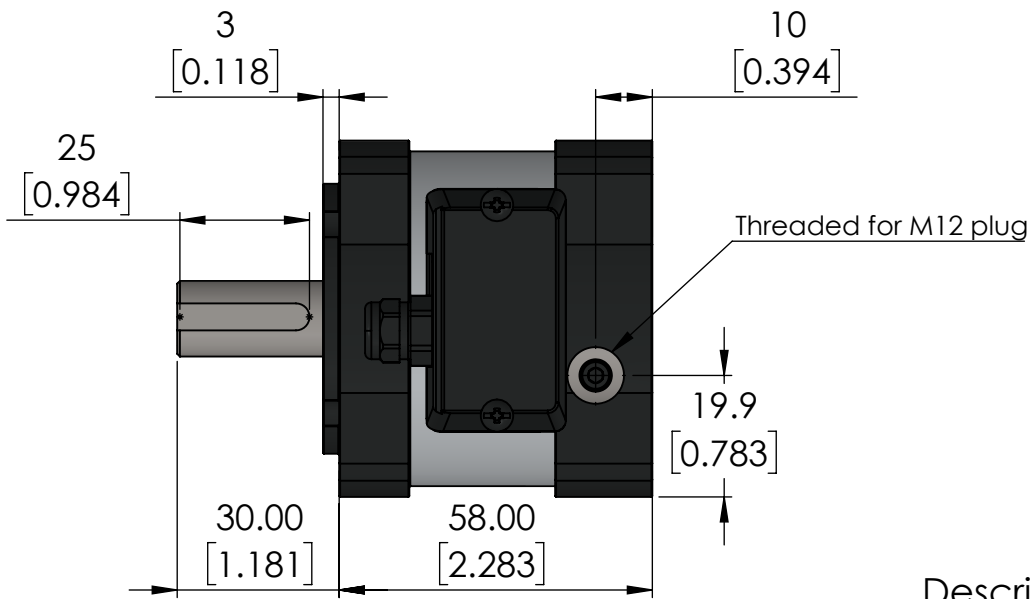
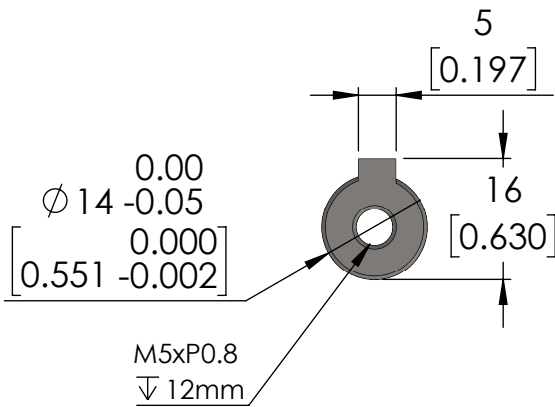
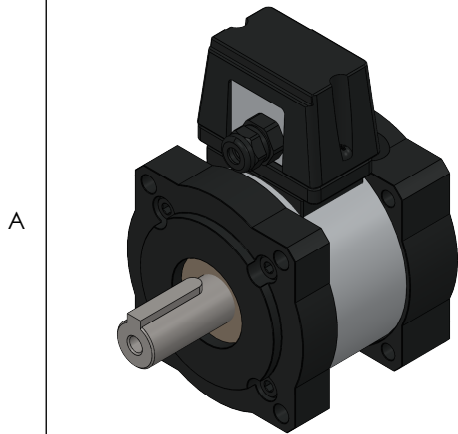
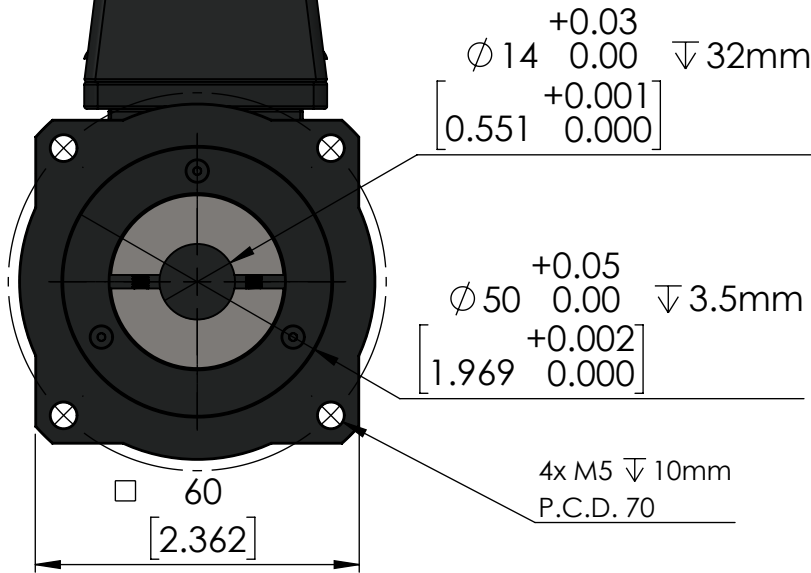
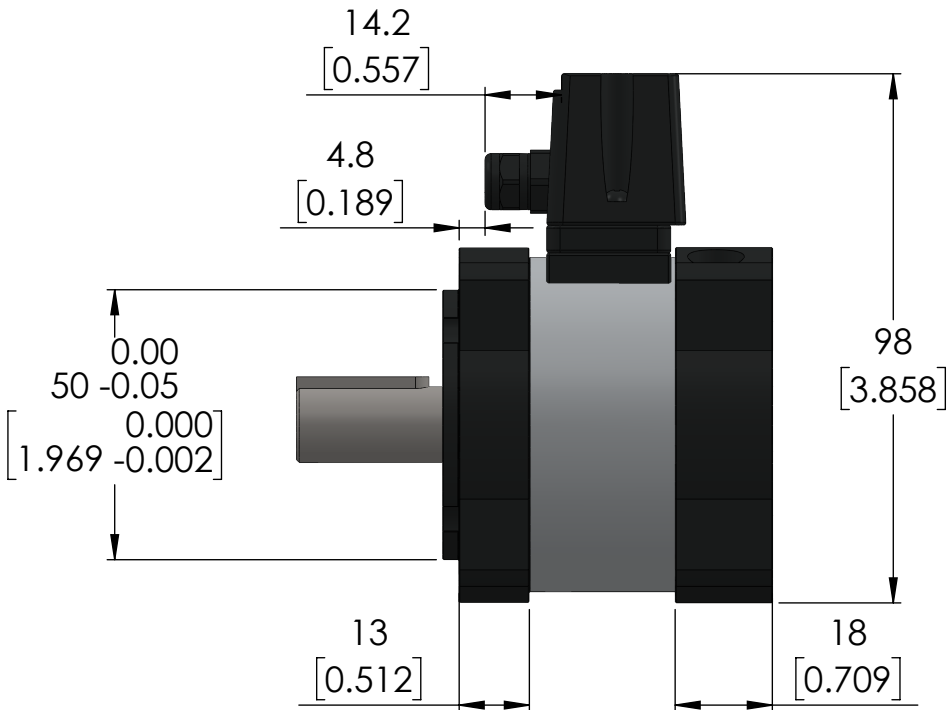
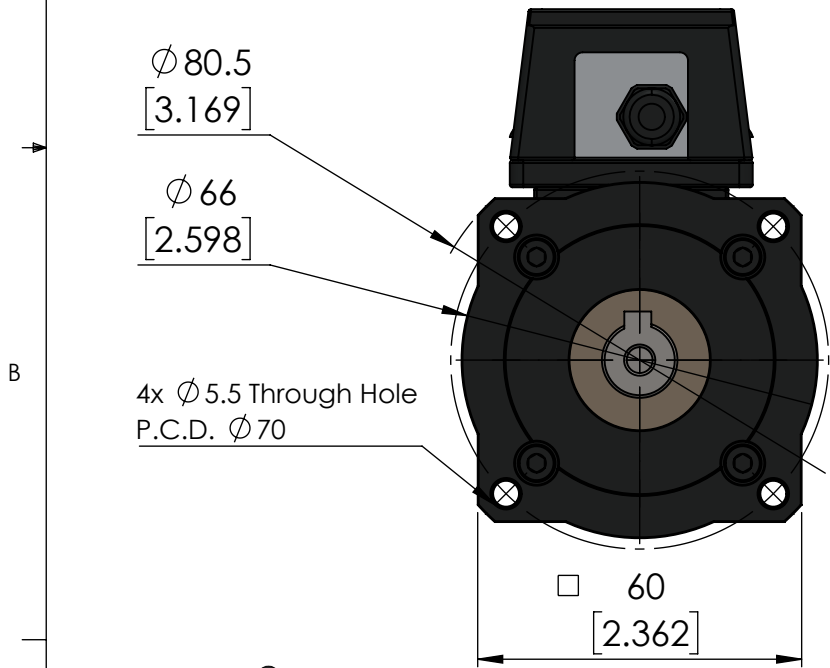



Specifications	
Holding Torque (Nm)	1.9
Voltage (Vdc)	24
Current (A)	0.53
Power (W)	12.5
Max Speed (rpm)	4000
Inertia (kg-cm2)	0.25
Weight (kg)	0.83



Description of operation:
Brake is spring applied when no power is supplied to the unit. When power is supplied, the breaking action is released.



UNITS: mm [inch]

Unless otherwise specified, tolerance to be: CNS 4018 IT 14 Linear measures 0.5-3 ± 0.1 3-6 ± 0.1 6-30 ± 0.2 30-120 ± 0.3 120-315 ± 0.5	NAME	DATE	DO NOT SCALE DRAWING		DIMENSIONS ARE METRIC	
	DRAWN	M.Dank	Feb 9, '21	TITLE: 60mm Inline Brake		
	CHECKED					
	ENG APPR.					
PROPRIETARY AND CONFIDENTIAL THE INFORMATION CONTAINED IN THIS DRAWING IS THE SOLE PROPERTY OF MYOSTAT MOTION CONTROL INC. ANY REPRODUCTION IN PART OR AS A WHOLE WITHOUT THE WRITTEN PERMISSION OF COOLMUSCLE INC. IS PROHIBITED.	 Myostat Motion Control Inc. +1 905-836-4441 www.myostat.ca		SIZE B	PRT. NO. IB060-1.9-J60-14		REV 1.1
			SCALE: 1:1		WEIGHT: -	SHEET 1 OF 1