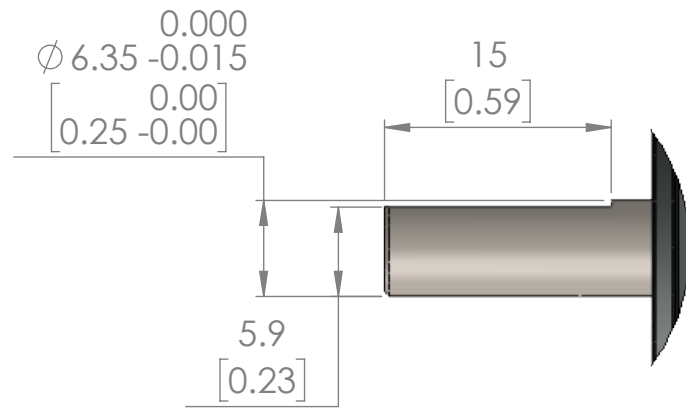
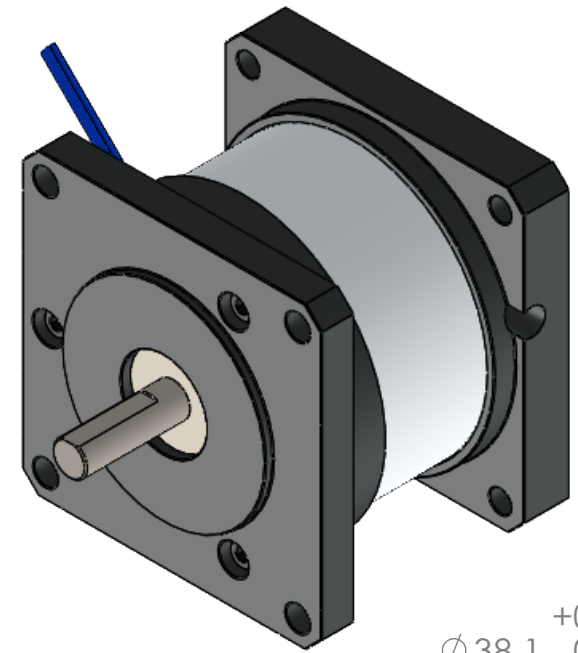


# Specifications

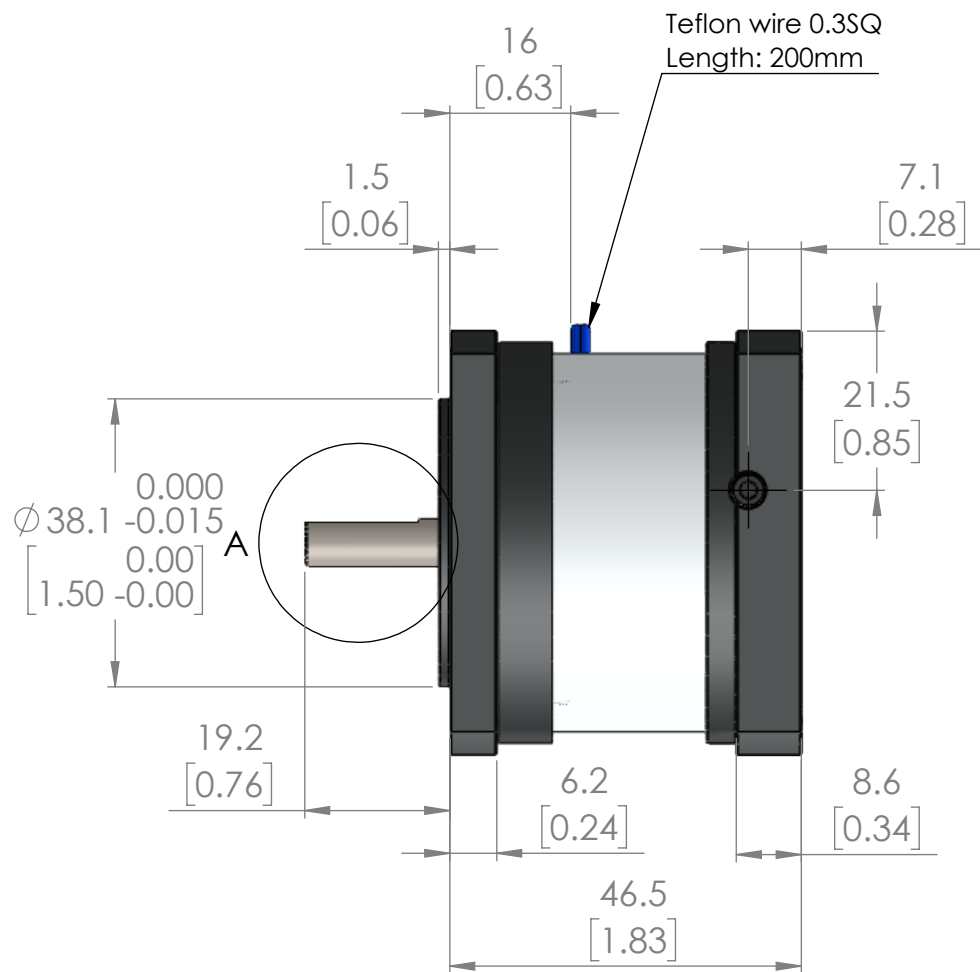
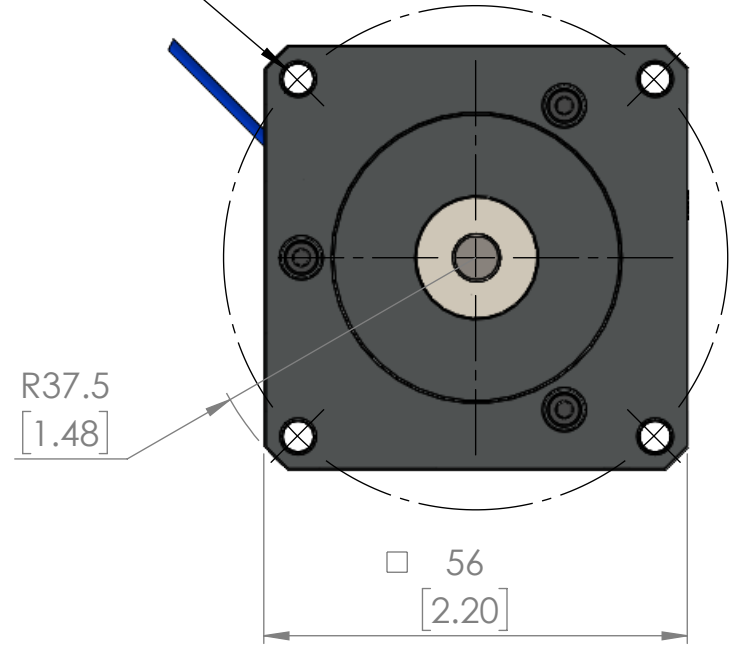
Holding Torque (Nm)	0.7
Voltage (Vdc)	24
Current (A)	0.3
Power (W)	7.5
Max Speed (rpm)	4000
Inertia (kg-cm <sup>2</sup> )	0.2
Weight (kg)	0.46



DETAIL A  
SCALE 2 : 1



4x 4.5 Through hole  
P.C.D.  $\phi$ 66.7



$\phi$ 38.1  $\begin{matrix} +0.015 \\ 0.000 \\ -2.5\text{mm} \end{matrix}$   
[1.50 0.00]


$\phi$ 6.35  $\begin{matrix} +0.015 \\ 0.000 \\ -22\text{mm} \end{matrix}$   
[0.25 0.00]

R37.5  
[1.48]

4x M4  
P.C.D.  $\phi$ 66.7

UNITS: mm [inch]

Description of operation:  
Brake is spring applied when no power is supplied to the unit. When power is supplied, the breaking action is released.

Unless otherwise specified, tolerance to be: CNS 4018 IT 14 Linear measures 0.5-3 ±0.1 3-6 ±0.1 6-30 ±0.2 30-120 ±0.3 120-315 ±0.5	NAME	DATE	DO NOT SCALE DRAWING	DIMENSIONS ARE METRIC	
	DRAWN	M.Reynolds	Mar-06-2018	TITLE:  <h2>56mm Inline Brake</h2>	
	CHECKED				
ENG APPR.					
PROPRIETARY AND CONFIDENTIAL THE INFORMATION CONTAINED IN THIS DRAWING IS THE SOLE PROPERTY OF MYOSTAT MOTION CONTROL INC. ANY REPRODUCTION IN PART OR AS A WHOLE WITHOUT THE WRITTEN PERMISSION OF COOLMUSCLE INC. IS PROHIBITED.	 Myostat Motion Control Inc. +1 905-836-4441 www.myostat.ca		SIZE	PRT. NO.	REV
			B	IB056-0.7-N23-6.35	1.0
			SCALE: 1:1	WEIGHT: -	SHEET 1 OF 1