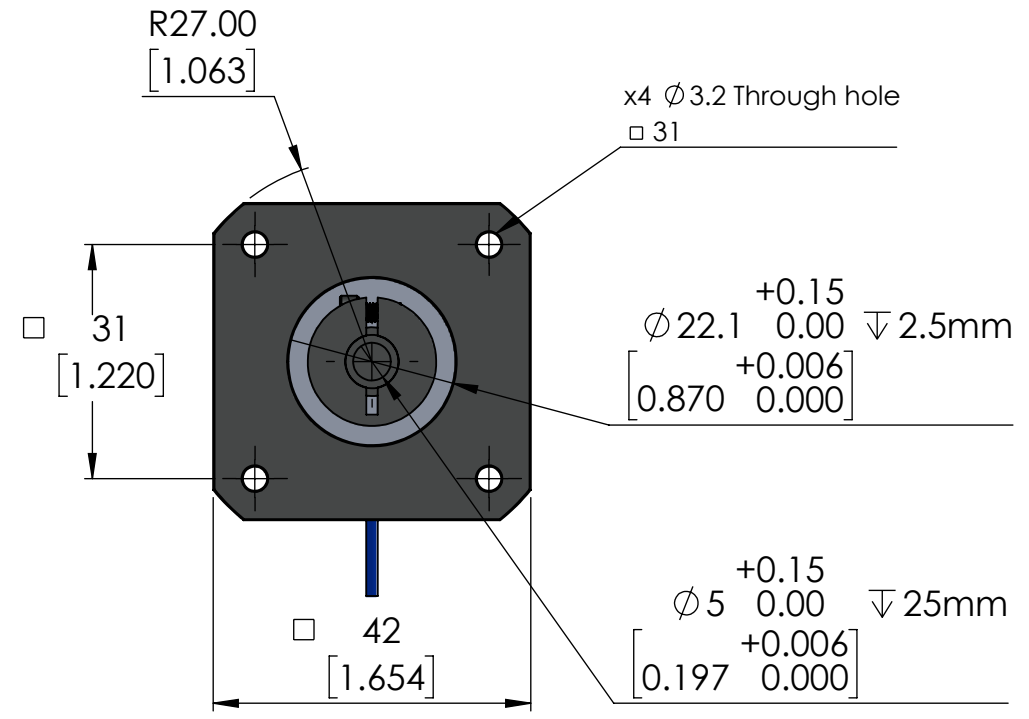
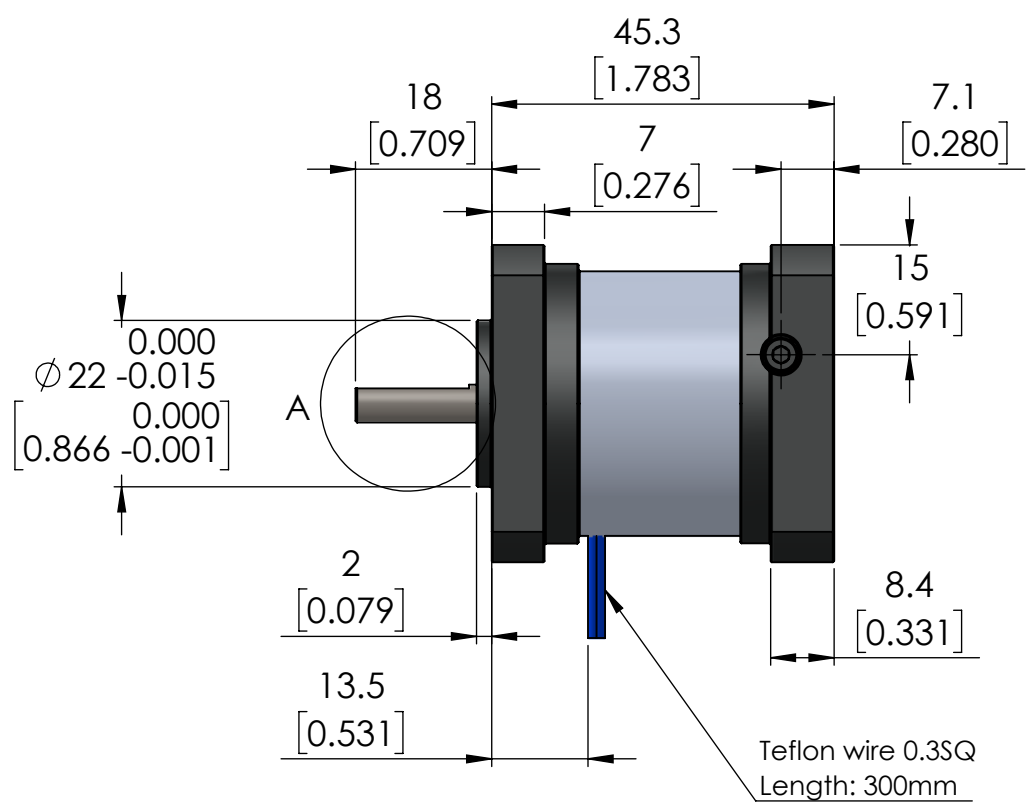
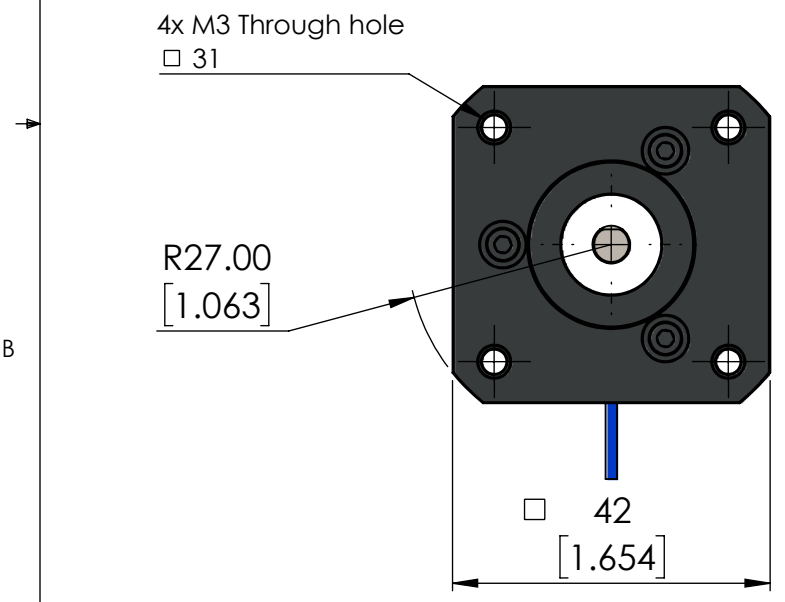
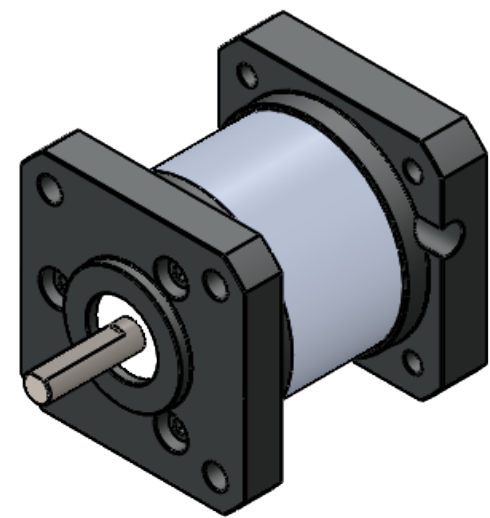
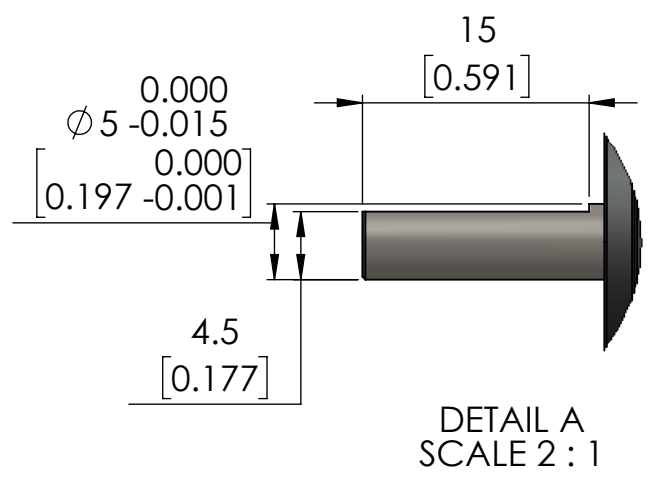


| Specifications | |
|-------------------------------|------|
| Holding Torque (Nm) | 0.16 |
| Voltage (Vdc) | 24 |
| Current (A) | 0.34 |
| Power (W) | 8.2 |
| Max Speed (rpm) | 4000 |
| Inertia (kg-cm ²) | 0.12 |
| Weight (kg) | 0.23 |



Description of operation:
Brake is spring applied when no power is supplied to the unit. When power is supplied, the braking action is released.

| | | | | | |
|--|--|------------|----------------------|---|--------------|
| Unless otherwise specified, tolerance to be: CNS 4018 IT 14 Linear measures 0.5-3 ±0.1 3-6 ±0.1 6-30 ±0.2 30-120 ±0.3 120-315 ±0.5 | NAME | DATE | DO NOT SCALE DRAWING | UNITS: mm [inch] | |
| | DRAWN | M.Reynolds | 08-01-2018 | TITLE: 42mm Inline Brake | |
| | CHECKED | | | | |
| ENG APPR. | | | | | |
| PROPRIETARY AND CONFIDENTIAL THE INFORMATION CONTAINED IN THIS DRAWING IS THE SOLE PROPERTY OF MYOSTAT MOTION CONTROL INC. ANY REPRODUCTION IN PART OR AS A WHOLE WITHOUT THE WRITTEN PERMISSION OF COOLMUSCLE INC. IS PROHIBITED. | Myostat Motion Control Inc. +1 905-836-4441 www.myostat.ca | | SIZE | PRT. NO. | REV |
| | | | B | IB042-0.16-N17-5 | 1.0 |
| | | | SCALE: 1:1 | WEIGHT: - | SHEET 1 OF 1 |