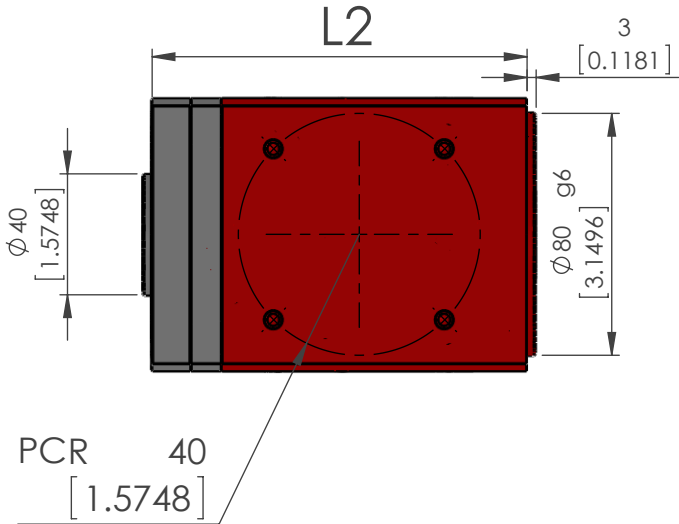
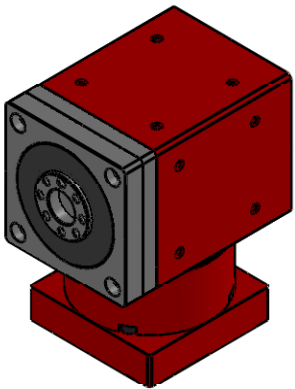


TECHNICAL DATA				
	Units	Ratio	RAFS	RLFS
Available Ratios	-		1,2,3,4,5	2,3,4,5
Nominal Output Torque	Nm	1	73	-
		2	69.7	
		3	54.4	
		4	49.4	
		5	47.8	
Max. Ouput Torque	RPM	1 - 5	nominal x2	
Emergency Stop Torque			nominal x2.5	
Nominal Input Speed			4000	
Max. Input Speed			6000	
Input Shaft Moment of Inertia	kg-cm^2	1	1.19	-
		2 - 5	0.9	
Max. Axial Load	N	1 - 5	1435	1225
Max. Radial Load			3440	2690
Torsional Stiffness	Nm/arcmin	1	12.2	-
		2	11.1	
		3	9.1	
		4	8.2	
		5	8	
Efficiency at Full Load	%	1 - 5	95≤	
Avg. Service Life	Hrs		20,000	
Weight	Kg		6.4	5.7
Backlash	arcmin		≤6	
Noise Level*	dB		≤75	
Protection Rating	IP rating		64	
Operating Temp.	°Celcius		-20 to 100	

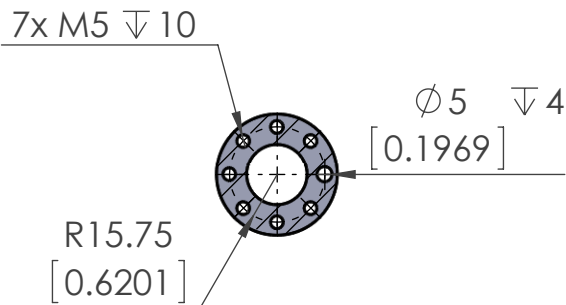
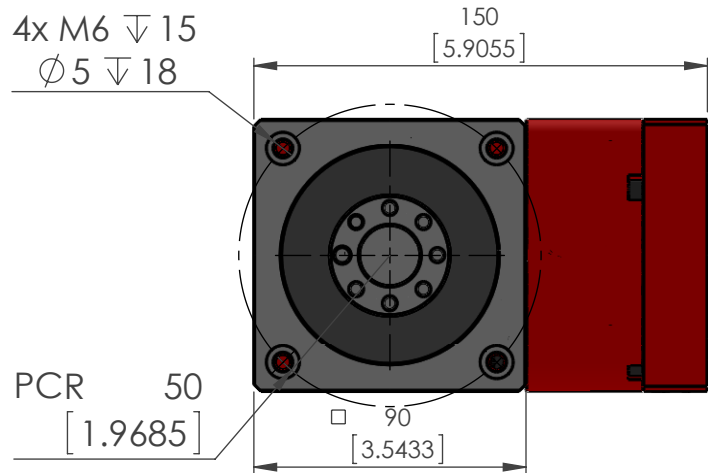
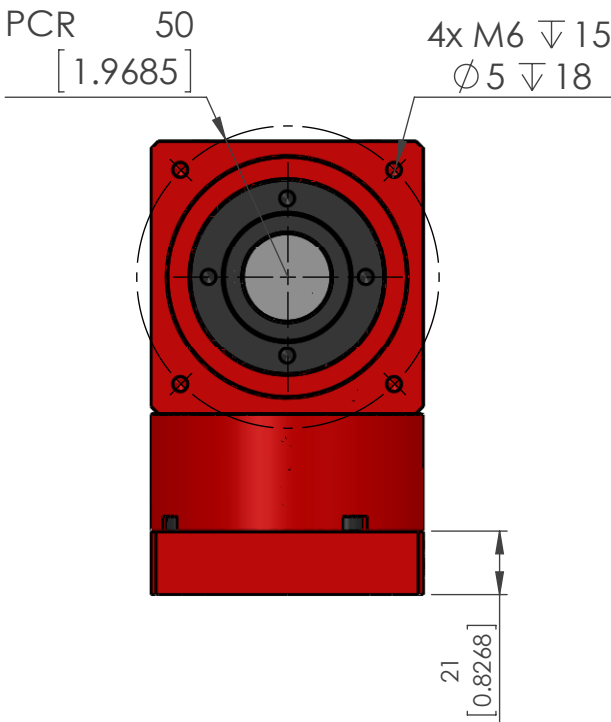
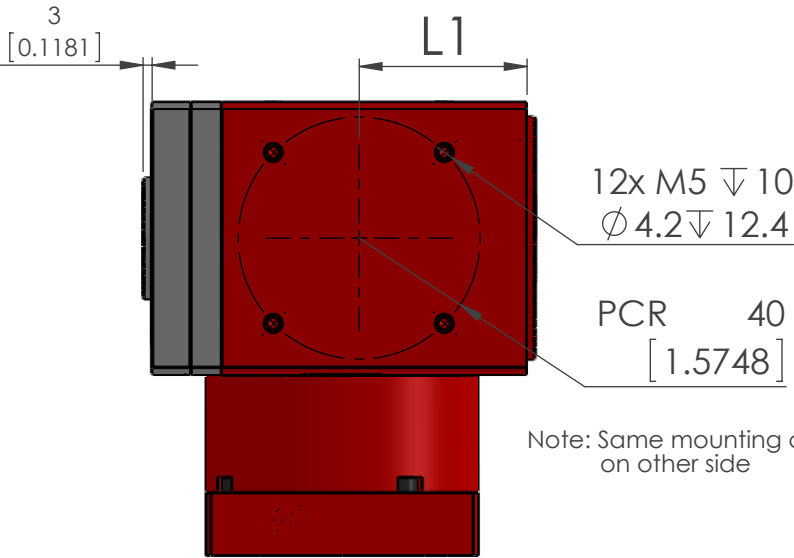


Model	L1	L2
RLFS-090-00 □	55.5	124
RAFS-090-00 □	68	149

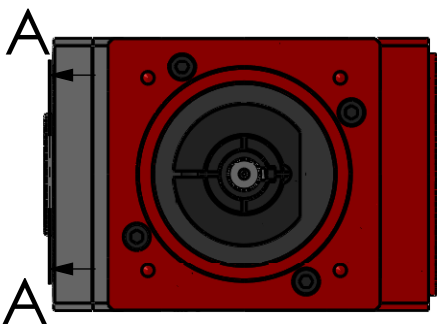
Note: RLFS-090-00 □ model shown



SCALE 4:1



A-A (1 : 2.5)



Various input options available for most common motors

Unless otherwise specified, tolerance to be: CNS 4018 IT 14 Linear measures
0.5-3 ± 0.1
3-6 ± 0.1
6-30 ± 0.2
30-120 ± 0.3
120-315 ± 0.5

PROPRIETARY AND CONFIDENTIAL
THE INFORMATION CONTAINED IN THIS DRAWING IS THE SOLE PROPERTY OF MYOSTAT MOTION CONTROL INC.
ANY REPRODUCTION IN PART OR AS A WHOLE WITHOUT THE WRITTEN PERMISSION OF COOLMUSCLE INC. IS PROHIBITED.

UNITS: mm [inch]

NAME	DATE	DO NOT SCALE DRAWING	DIMENSIONS ARE METRIC
DRAWN	M. Dank	May 28, 2012	TITLE:
CHECKED			R-Series Gearbox
ENG APPR.			
SIZE	PRT. NO.	REV	
B	R □ FS-090-00 □	0.0	
SCALE: 1:2.5	WEIGHT: -	SHEET 1 OF 1	