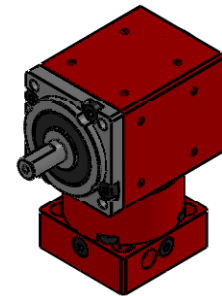
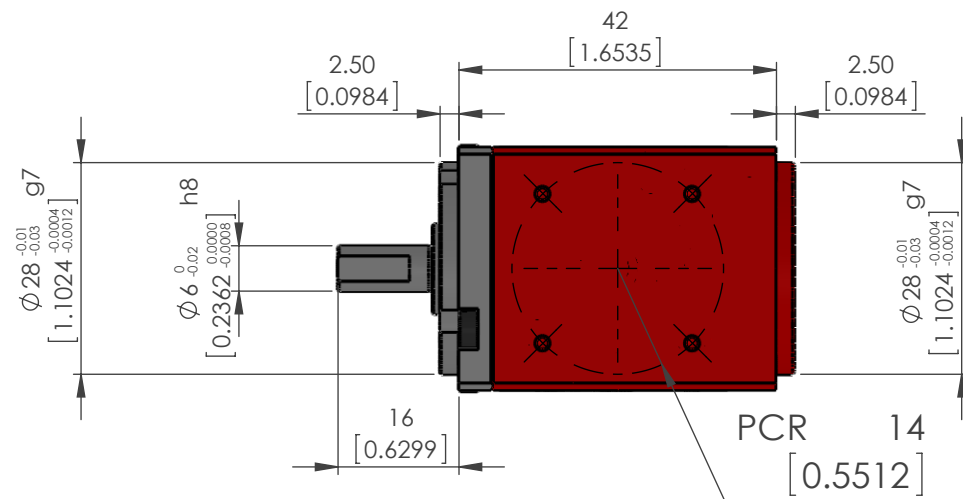
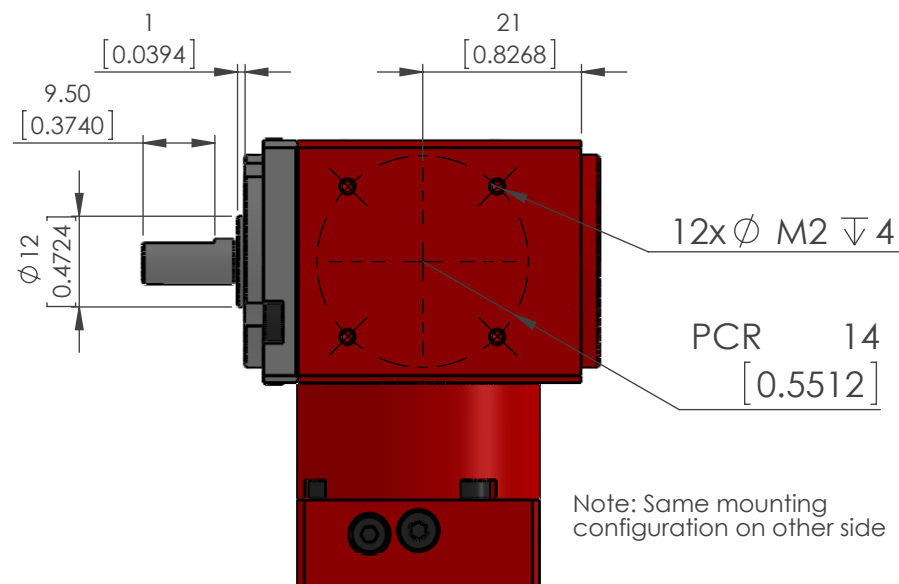


TECHNICAL DATA			
	Units	Ratio	Value
Available Ratios	X:1		2,3,4,5
Nominal Output Torque	Nm	2,3,4	4
		5	3
Max. Ouput Torque	RPM	2 ~ 5	3x nominal
Nominal Input Speed			3,000
Max. Input Speed			8,000
Input Shaft Moment of Inertia			0.01
Max. Axial Load			248
Max. Radial Load			496
Torsional Stiffness			0.167
Efficiency at Full Load	90≤		
Avg. Service Life	Hrs		20,000
Weight	Kg		0.25
Backlash	arcmin	≤10	
Noise Level*	dB	≤65	
Protection Rating	IP rating	64	
Operating Temp.	°Celcius	-20 to 100	

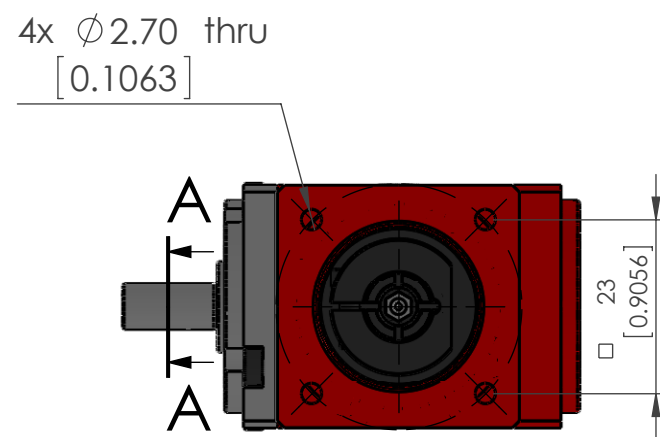
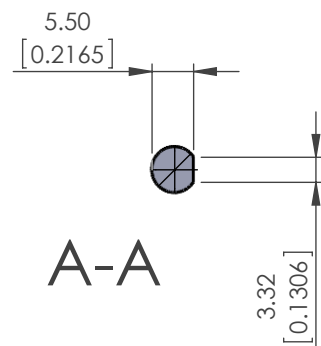
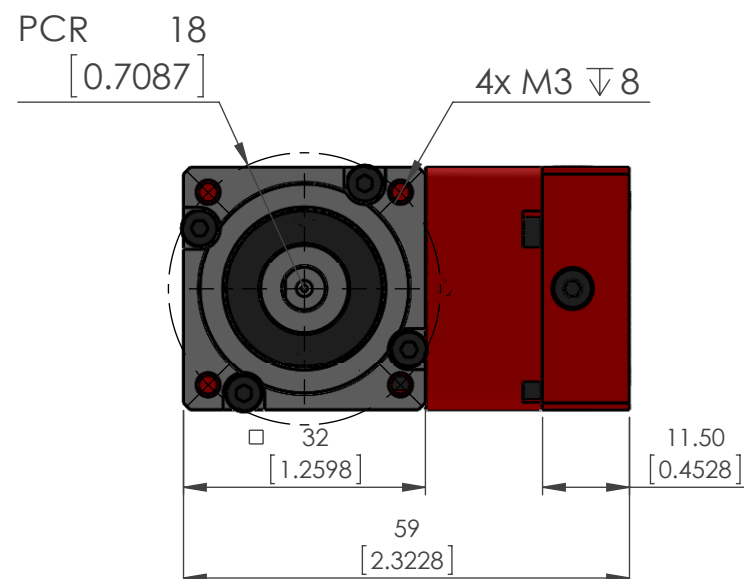
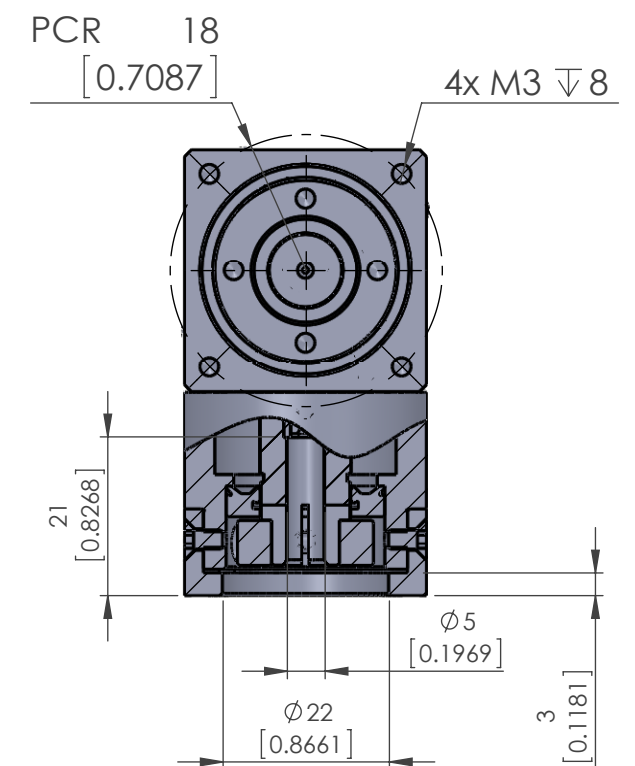
*Sound pressure level measured at 1m distance and a 3,000 RPM input speed under no load



SCALE 1 : 2




Note: Same mounting configuration on other side



NEMA 11 mounting shown, other configurations available for most common motors

UNITS: mm [inch]

	NAME	DATE	DO NOT SCALE DRAWING		DIMENSIONS ARE METRIC	
DRAWN	M. Dank	June 7, 2012	TITLE: <h1>R-Series Gearbox</h1>			
CHECKED						
ENG APPR.						
 Myostat Motion Control Inc. +1 905-836-4441 www.myostat.ca			SIZE		PRT. NO.	REV
			B		RLAS-032-00 <input type="checkbox"/>	0.0
			SCALE: 1:1		WEIGHT: -	SHEET 1 OF 1

	Unless otherwise specified, tolerance to be: C/N5 4018 IT 14 Linear measures
	0.5-3 ± 0.1
	3-6 ± 0.1
	6-30 ± 0.2
	30-120 ± 0.3
	120-315 ± 0.5

PROPRIETARY AND CONFIDENTIAL

THE INFORMATION CONTAINED IN THIS
DRAWING IS THE SOLE PROPERTY OF
MYOSTAT MOTION CONTROL INC.
ANY REPRODUCTION IN PART OR AS A
WHOLE WITHOUT THE WRITTEN PERMISSION
OF COOLMUSCLE INC. IS PROHIBITED.